

TYPE
GBT

Features

- Manufactured from high strength 6061-T6 aluminum alloy
- Approved for UL 467 (Grounding & Bonding)
- Lay in style
- No mounting required
- 4 Taps (#2-14) stranded or solid
- Stainless steel screws
- Serrations in conductor wire way
- Patented

Benefits

- For use with copper and aluminum conductors
- Meets NEC 250.94 installation requirements.
- Eliminates the need to cut or splice into existing conductor
- Allows fast simple installation on ground conductor below meter
- For bonding multiple communication systems (Phone, TV, Cable, etc.)
- For corrosion resistance
- Cuts oxidation



Fig. 1



Fig. 2

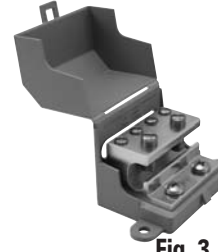


Fig. 3

Catalog Number	Figure Number	Wire Range Main	Wire Range Tap	Length	Width	Height	Hex Size	
							Main	Tap
GBT-1/0	1	1/0-8	2-14str-sol	2.250	1.125	1.160	S	S
GBT-250	1	250kcmil-8str - 1/0-8sol	2-14str-sol	2.250	1.375	1.587	7/32	S
GBT-1/0-M	2	1/0-8	2-14str-sol	2.250	1.750	1.160	S	S
GBT-1/0-M-W/C	3	1/0-8	2-14str-sol	2.730	3.930	2.110	S	S

All wire sizes, unless noted otherwise, are American Wire Gauge (AWG)

UL File E34440